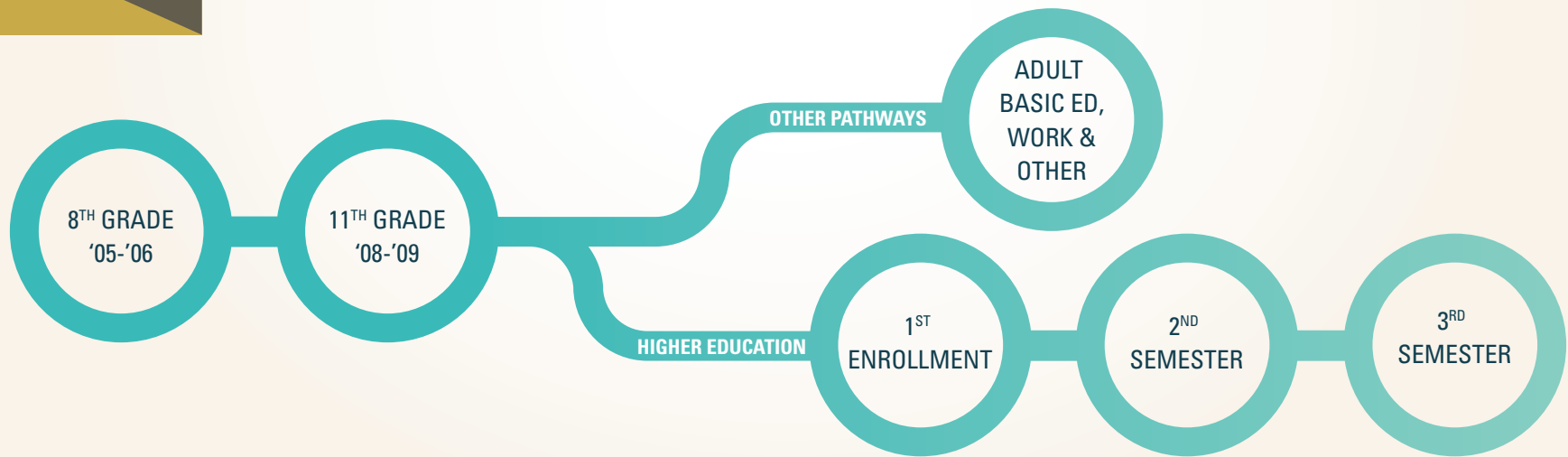


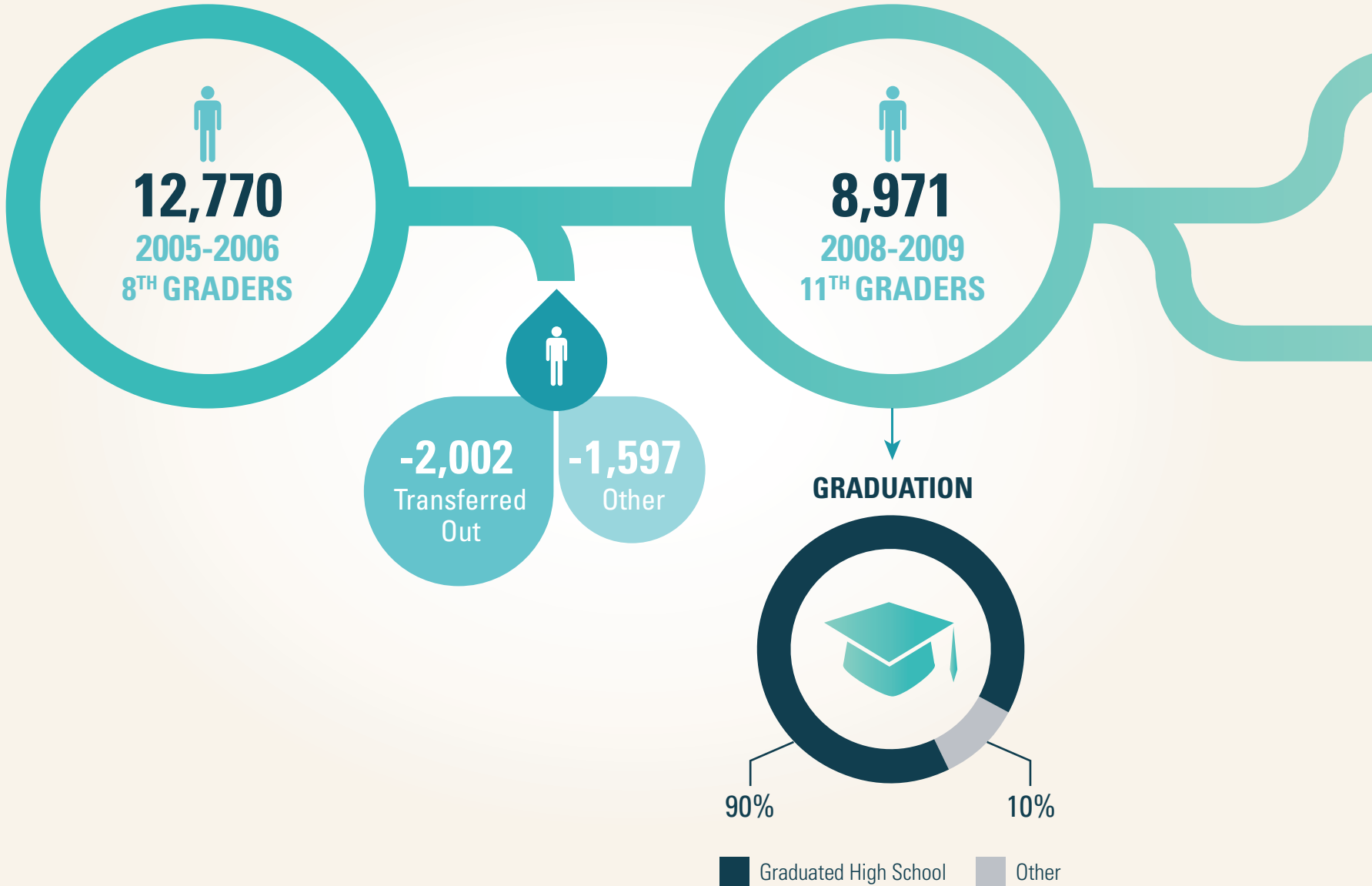


WHERE ARE RHODE ISLAND'S 2005 8TH GRADERS?



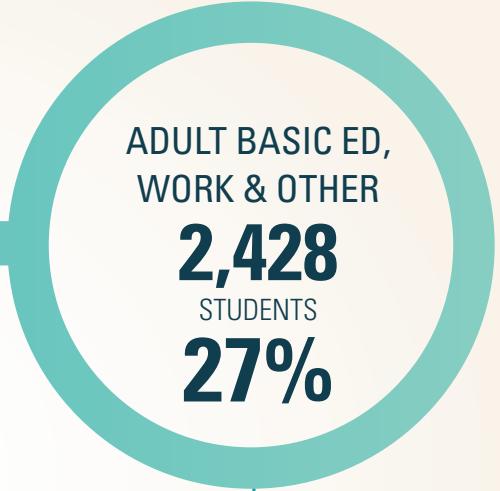
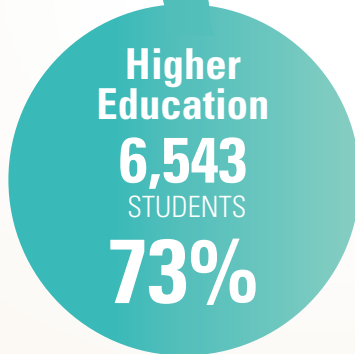
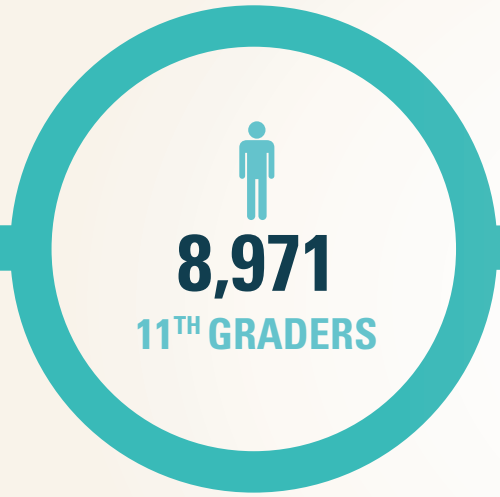


RI 2005 8TH GRADERS REACHING 11TH GRADE ON TIME



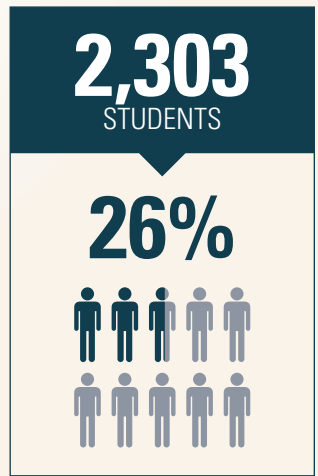
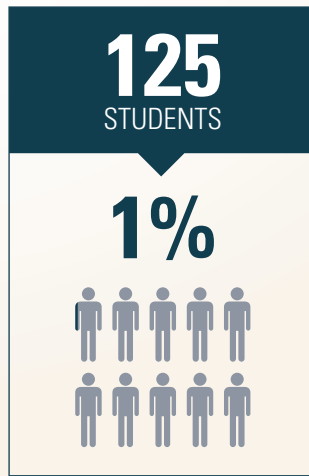


11TH GRADE TO OTHER PATHWAYS



**Adult
Basic
Education**

**No Known
Additional
Education**





11TH GRADE TO HIGHER EDUCATION



8,971
11TH GRADERS

RI Public Higher Education

4,555
STUDENTS

51%



CCRI **2,448**

RIC **670**

URI **1,437**

1ST

ENROLLMENT

6,543

STUDENTS

73%

Other Higher Education

1,988
STUDENTS

22%



In-State Private **481**

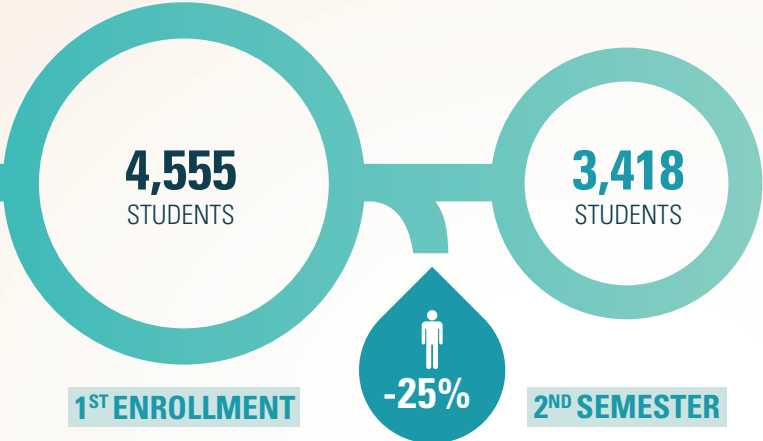
Out-of-State Private **899**

Out-of-State Public **608**

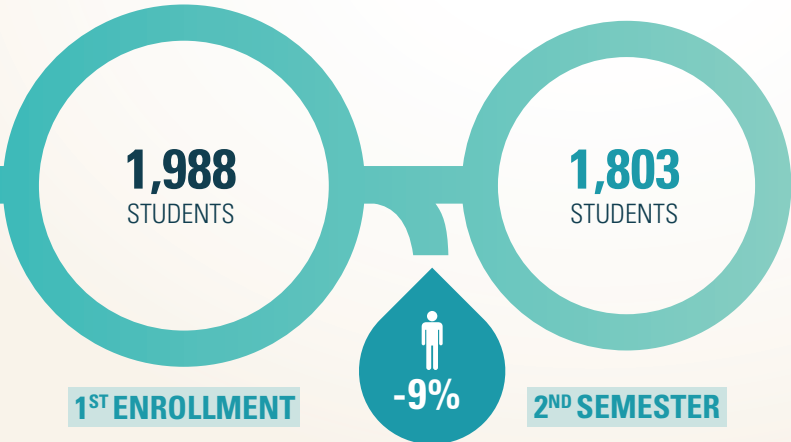


HIGHER EDUCATION - 2ND SEMESTER

RI Public Higher Education



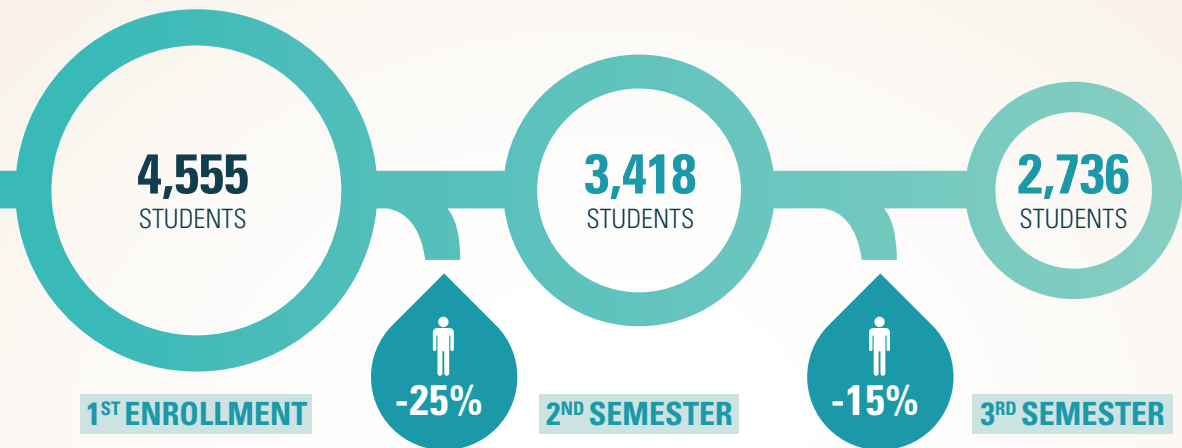
Other Higher Education





HIGHER EDUCATION - 3RD SEMESTER

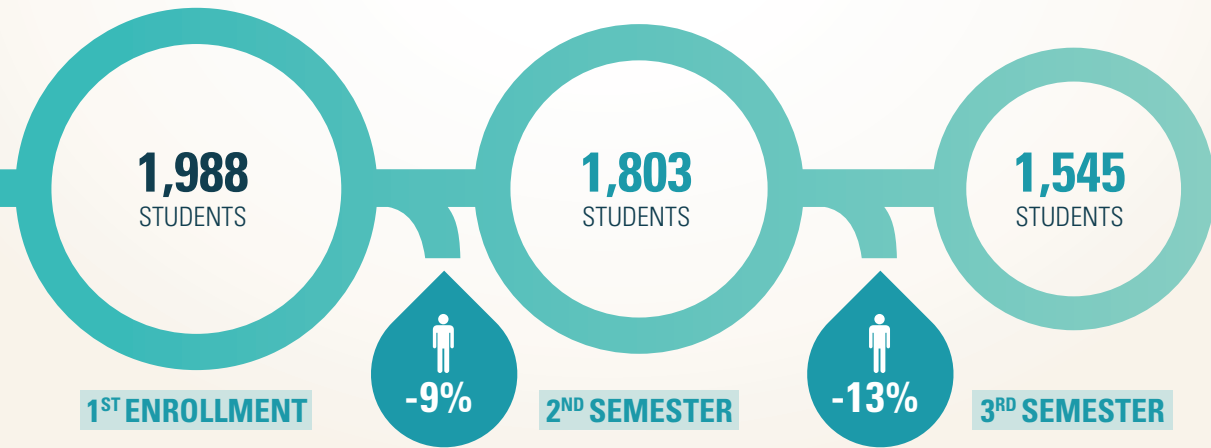
RI Public Higher Education



CUMULATIVE LOSS IN RI PUBLIC HIGHER EDUCATION



Other Higher Education



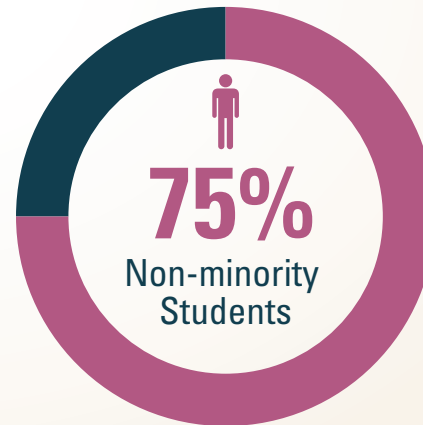
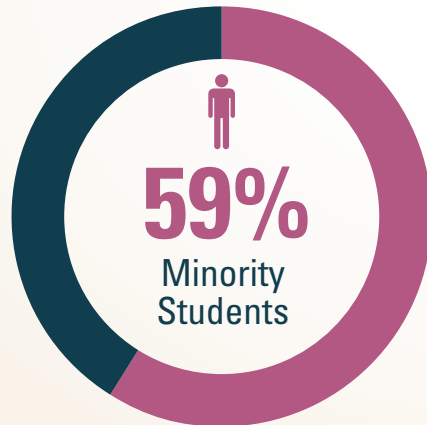
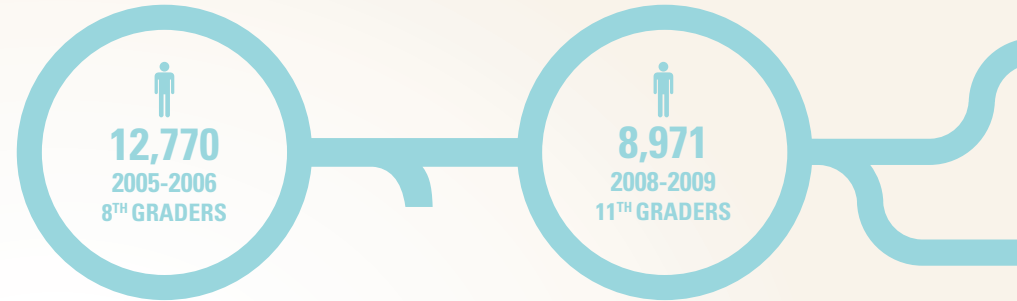
CUMULATIVE LOSS IN OTHER HIGHER EDUCATION





11TH GRADE

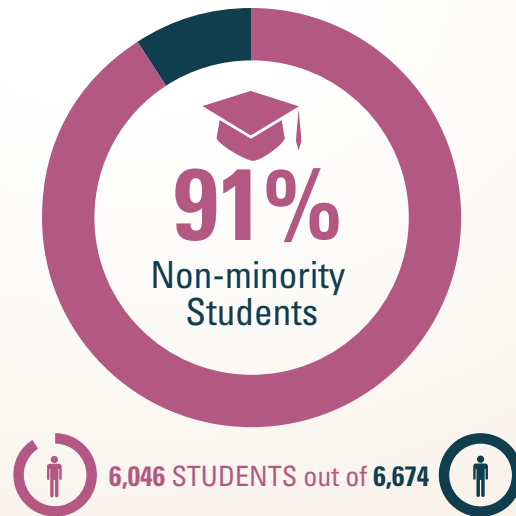
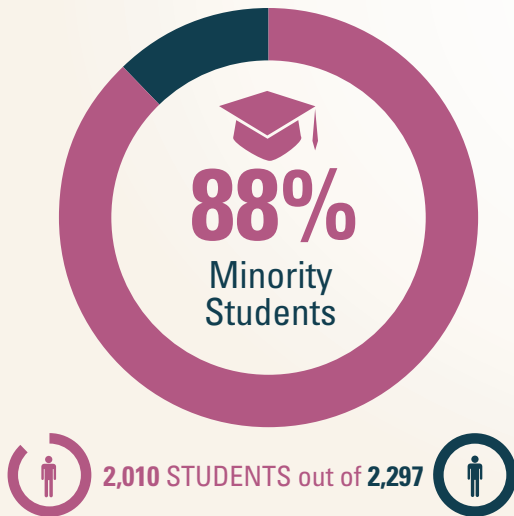
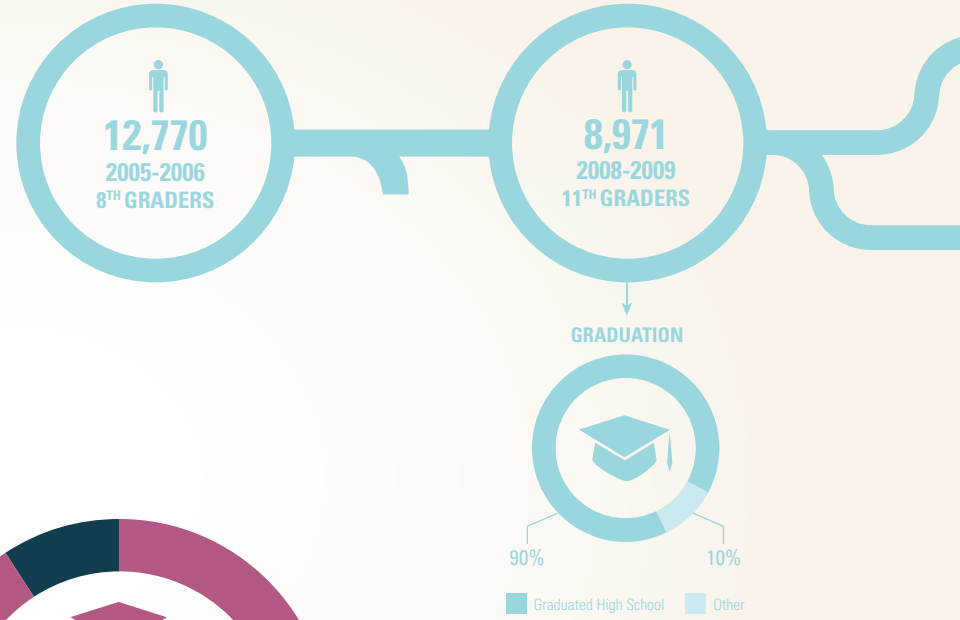
Less than 60% of minority students stay enrolled, on track, and make it to 11th grade on time.

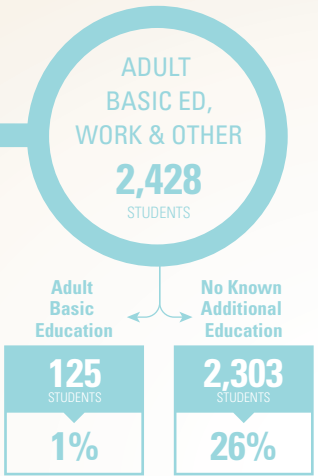
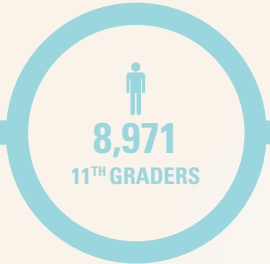




GRADUATION

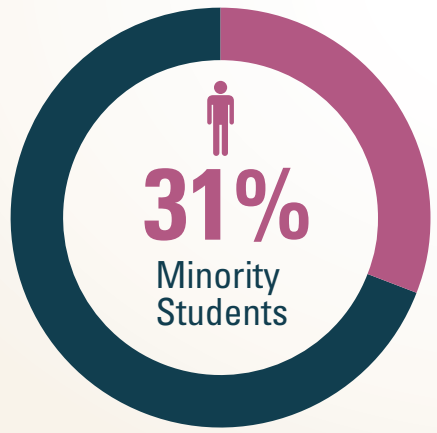
When minority students make it to 11th grade on time, they are nearly just as likely to graduate from high school as their non-minority peers.



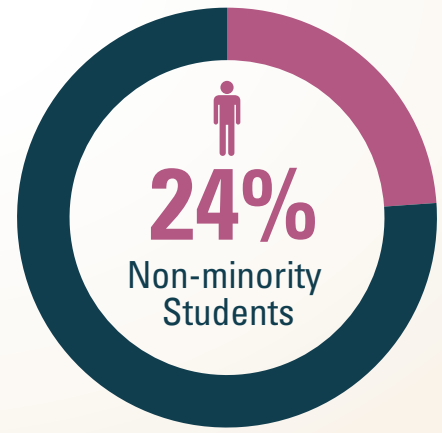


NO KNOWN ADDITIONAL EDUCATION

Nearly a third of minority students had no known education; the same is true for less than a quarter of non-minority students.



723 STUDENTS out of 2,297



1,580 STUDENTS out of 6,674



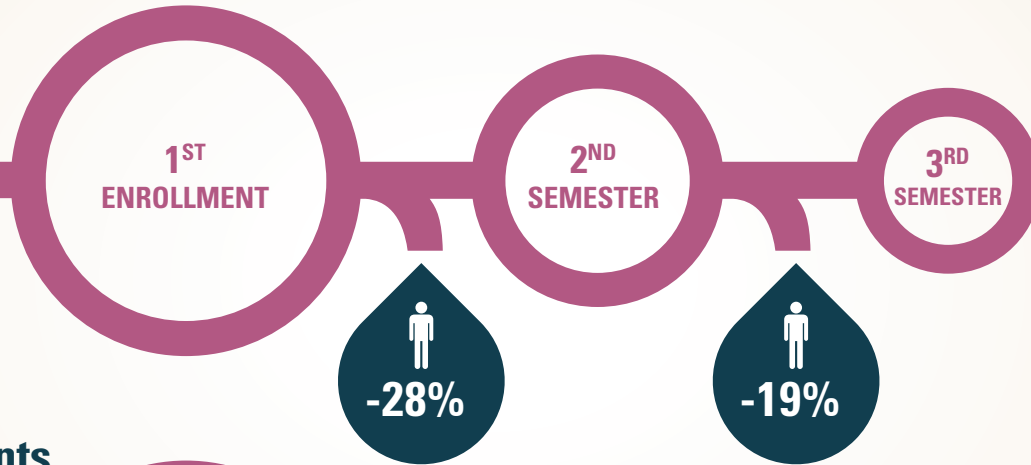
All Students RI Public Higher Education



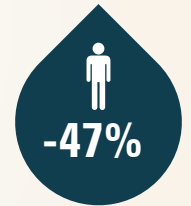
Minority Students

Enrolled in Public In-State Higher Ed

1,217 out of **2,297** STUDENTS ENROLLED



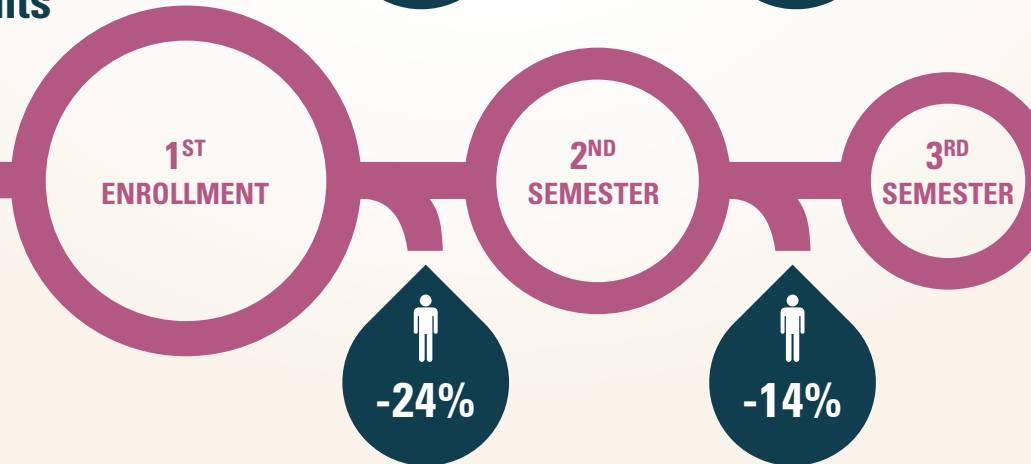
CUMULATIVE LOSS OF MINORITY STUDENTS FOR RI PUBLIC HIGHER EDUCATION



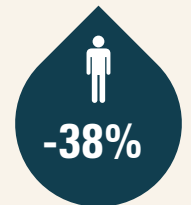
Non-minority Students

Enrolled in Public In-State Higher Ed

3,338 out of **6,674** STUDENTS ENROLLED

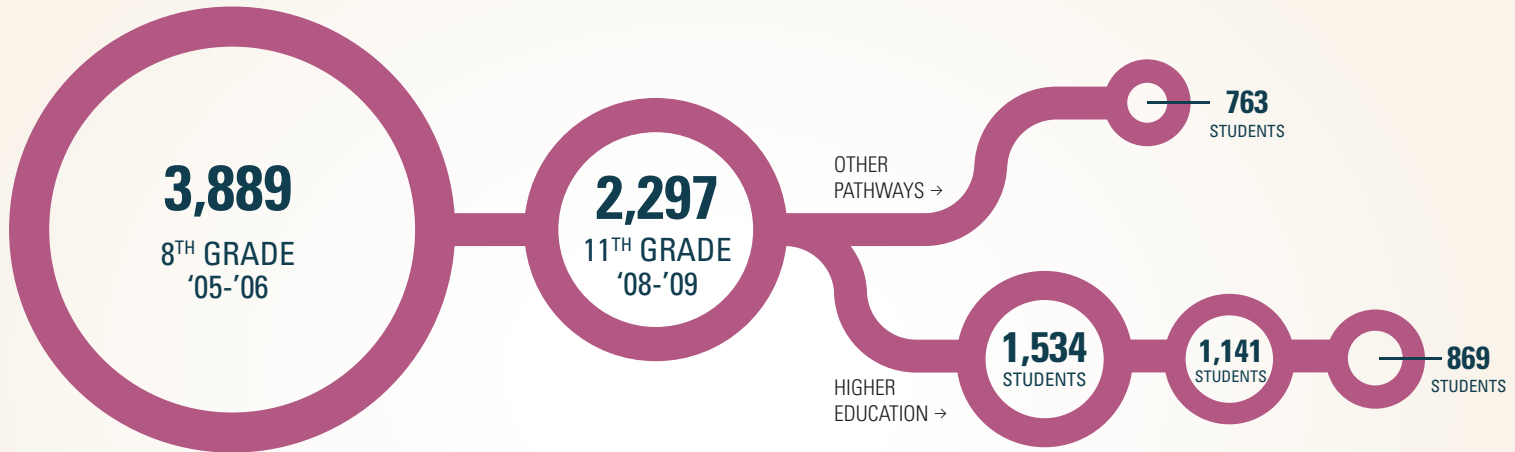


CUMULATIVE LOSS OF NON-MINORITY STUDENTS FOR IN-STATE HIGHER EDUCATION

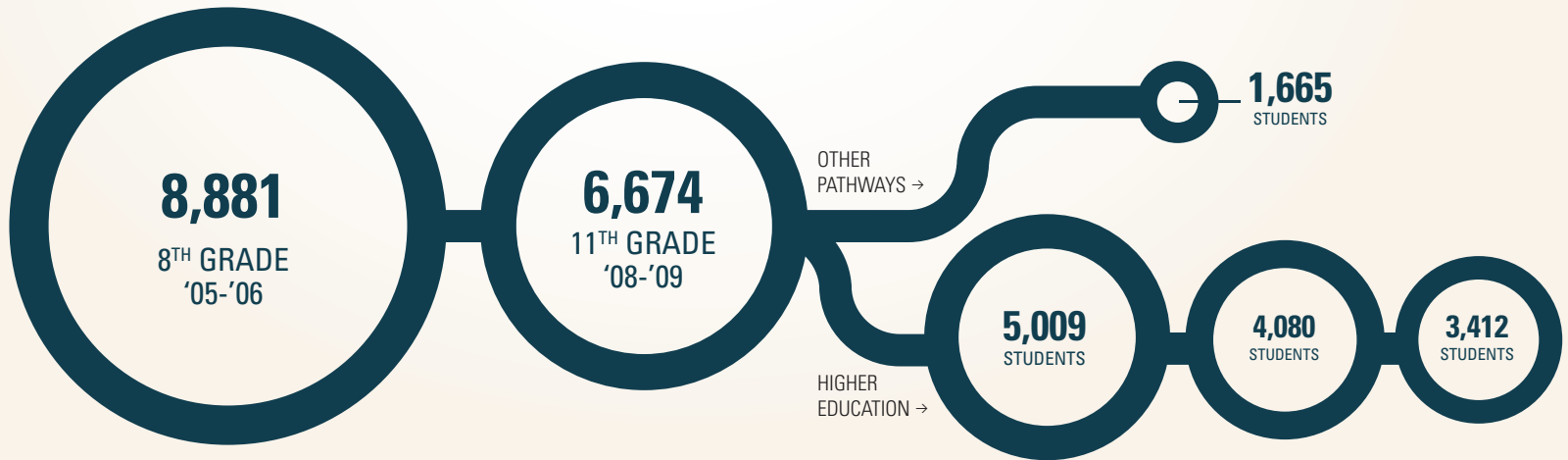


RHODE ISLAND'S EDUCATION CHALLENGES


MINORITY
STUDENTS




NON-MINORITY
STUDENTS



RHODE ISLAND'S EDUCATION OPPORTUNITIES

Making investments

Credit recovery

Affordability

Experiential learning

Student achievement

Early Childhood Education

High School Graduation

One board of education

Better academic preparation & support

College & career pathways

Educational Attainment

Seamless PK-20 agenda

Public/private partnerships

Access to grants

Mentoring

Dual enrollment

Reverse transfers